

ELECTRIC MOBILITY





### **INDEX OF THE CONTENTS**

CPX.....	pag. 4
F01.....	pag. 12
VS1.....	pag. 24
VS1 PRO.....	pag. 36
VS2.....	pag. 44
VS3.....	pag. 52
Technical data.....	pag. 60



**Happiness is a journey**



CPX

The best electric scooter on the market **implements its load capacity** for a **CPx** at the highest level.

# MORE POWER MORE DURABLE MORE LOAD CAPACITY



  
**105** Km/h  
Max. Speed

  
**8** kW  
Engine Peak Power

  
**100** Km\*  
Range

Tested at an average speed of 45 km/h; rider weight 75 kg; with 2 batteries.

## ENJOY YOUR BUSINESS WITH CPX.

With the CPX your business will be much easier with the **reverse function**, the **USB charger**, the **technology**, the **increased load capacity** and the **comfort** of this scooter allow you to enjoy all roads without worries.





VMOTO FLEET

## LUGGAGE RACK IN CARBON STEEL

Carbon steel rear luggage rack, safe and strong: has passed 1 million vibration resistance tests. Load capacity at the top of its category.



## CENTRAL CONTROL SYSTEM

Developed by Super Soco, CPx PRO Cargo has twice the carrying capacity of CPx. With a max load weight of 75 kg (excluding the rider), CPx PRO Cargo allows you to make more deliveries with fewer trips.



\*Optional APP. Request during purchase.



CPX

## CPX PRO CARGO COMES WITH MANY UP-GRADES

- One-push reverse button, for greater maneuverability
- Quick and easy to repair, with all major electronic components under the front cover, for fast maintenance with low operational costs.
- A more durable frame protection



White

**TECHNICAL INFORMATION**

<b>Homologation</b>	L3 (comparable to 125cc.)	<b>Weight</b>	143 kg
<b>Motor</b>	SUPER SOCO	<b>L*W*H</b>	2022 mm*757* mm*1450 mm
<b>Rated power</b>	7000 W	<b>Wheelbase</b>	1366 mm
<b>Maximum power</b>	8000 W	<b>Ground Clearance</b>	154 mm
<b>Battery model</b>	Polymer lithium battery	<b>Seat Height</b>	925 mm
<b>Battery capacity</b>	60 V/90 Ah	<b>Rims</b>	Fr. 2.15-16   Rr. 2.5-14
<b>Charging time</b>	7 h (double batteries)	<b>Tyres</b>	Fr. 100/80-16   Rr. 110/80-14
<b>Autonomy</b>	100 km*	<b>Suspension</b>	Hydraulic damping system
<b>Max speed</b>	105 km/h	<b>Brakes</b>	CBS
<b>Climbing angle</b>	≤ 20°	<b>Colors</b>	White
<b>Loading capacity</b>	75 kg (exclude rider)		

\*WMTC Stage 3

Tested at an average speed of 45 km/h; rider weight 75 kg.

**Warning:** The photos and technical information in this catalogue may refer to prototypes subject to modifications during production and are purely for illustration and reference purposes, and are therefore not binding on Vmoto International. Vmoto cannot be held responsible for any print and/or translation errors. This catalogue is transnational and therefore some products may not be available and/or their features may vary in accordance with local laws. Not all colours and versions are available in each country. Vmoto reserves the right to make changes and improvements to any product without obligation of prior notice or to make such changes to products already sold. Further characteristics of the products are contained in the pertinent owner's manuals. The products represented are not definitive versions and are therefore subject to significant changes at Vmoto's discretion without prior notice. The photographs published in this catalogue show only professional riders under controlled street conditions. Do not attempt to imitate such riding behaviour as it could be dangerous for you or other people on the road. This catalogue, including but not limited to the trademarks, logos, texts, images, graphics and table of contents herein, constitute Vmoto intellectual property, or in any event Vmoto has the right to reproduce it; any reproduction, modification or other whole or partial use of the catalogue or its contents, including publication on the Internet without the prior written consent of Vmoto, is prohibited. Actual battery consumption may vary based on many factors, including but not limited to riding style, maintenance performed, weather conditions, surface characteristics, tyre pressure, load, weight of the rider and the passenger, accessories. The weights in running order are considered with all operating fluids, standard equipment and battery. For more information visit [www.vmotosoco.com](http://www.vmotosoco.com).

April 2023



F01

# top of the range

Minimalist design, reliable nature. Its futuristic, clean lines perfectly reflect the pursuit of beauty as well as zero-emission nature.

**F01 is the pioneer of a new design line**, which stands between stylistic quality and comfort. Agile, handling and eye-catching, it is the perfect B2B two-wheeler for those who want to distinguish their fleet.



					
<b>45</b> km/h	<b>2</b> kW	<b>80</b> km	<b>80</b> km/h	<b>3.5</b> kW	<b>65</b> km
L1 speed	L1 Engine power	L1 Range	L3 speed	L3 Engine power	L3 Range

**design**

**at its best**

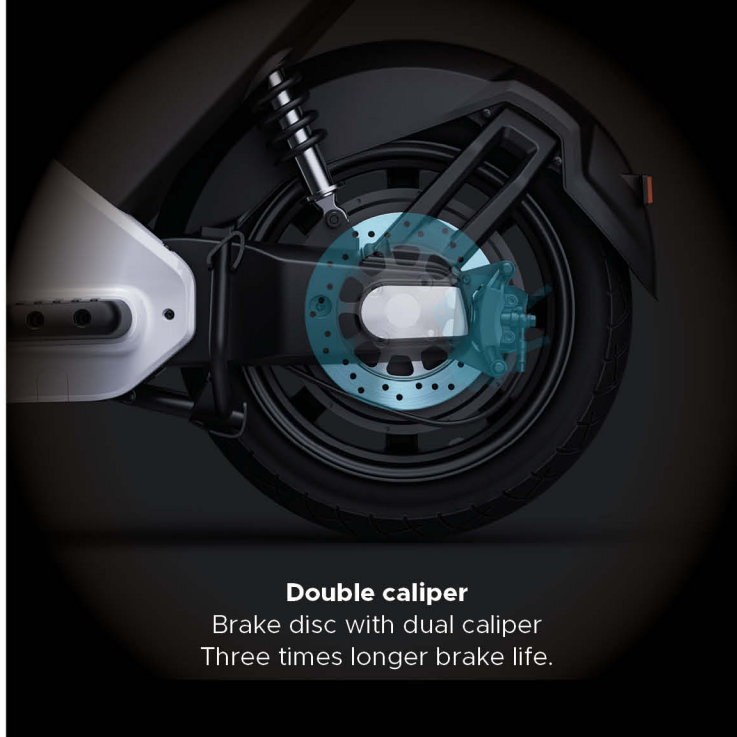






**Revers button**

User friendly reverse function for easy driving.



**Double caliper**

Brake disc with dual caliper  
Three times longer brake life.

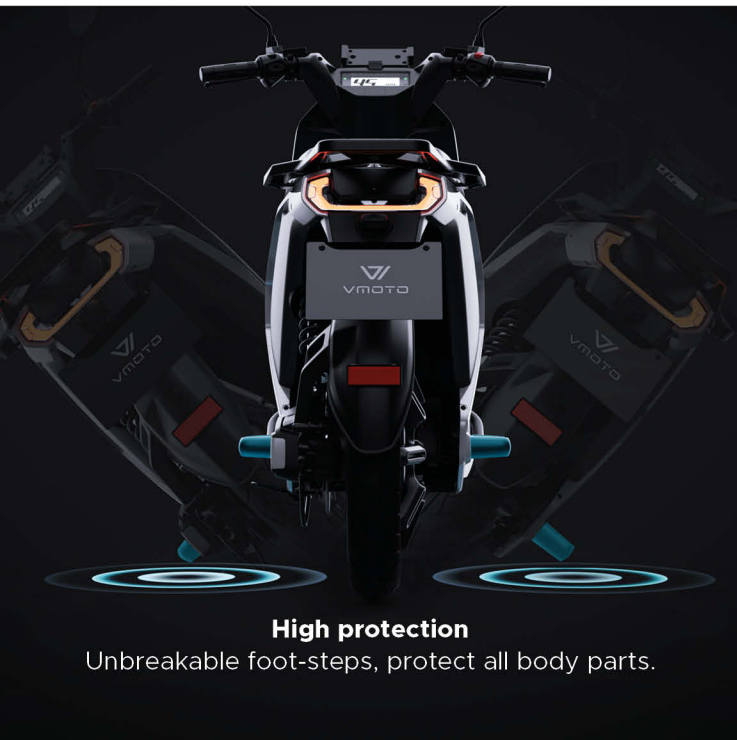


**60V45Ah**  
or  
**60V32Ah**  
Battery capacity

**3** years  
Warranty

**1500+**  
Cycles

**3.5h**  
Fast charger  
(optional)



**High protection**

Unbreakable foot-steps, protect all body parts.



**Always on the move**

The wheel change takes as little as 5 minutes.

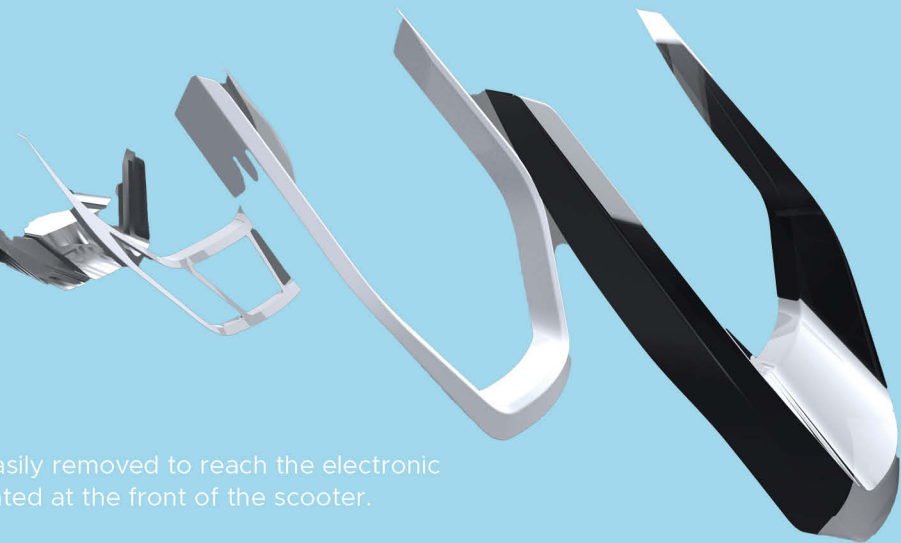
**FORMALIZED  
BATTERY PACK**

F01 battery pack fits on multiple Vmoto models:  
less battery stock for operator, more opportunity  
to live your never ending travel.



**QUICK ACCESS**

The front fairings of F01 can be easily removed to reach the electronic components, which are concentrated at the front of the scooter.



**EASY REPAIR**

Unique and unmistakable, it conveys elegance and solidity with a focus on easy repair in case of damage.



**IN THE SMALLEST DETAILS**

From the front headlight to the rear, every detail expresses quality, style and freshness, characterizing and differentiating the lines of F01.



create to  
**create**

make it  
**yours**



  
HELMET  
FOR SHARING

  
BATTERY  
LOCKER

  
GPS TRACKING  
INSIDE BATTERY

  
UNBREAKABLE  
PHONE HOLDER

  
SEAT SENSOR

  
BOX FOR SHARING

  
NFC

  
BOX FOR DELIVERY



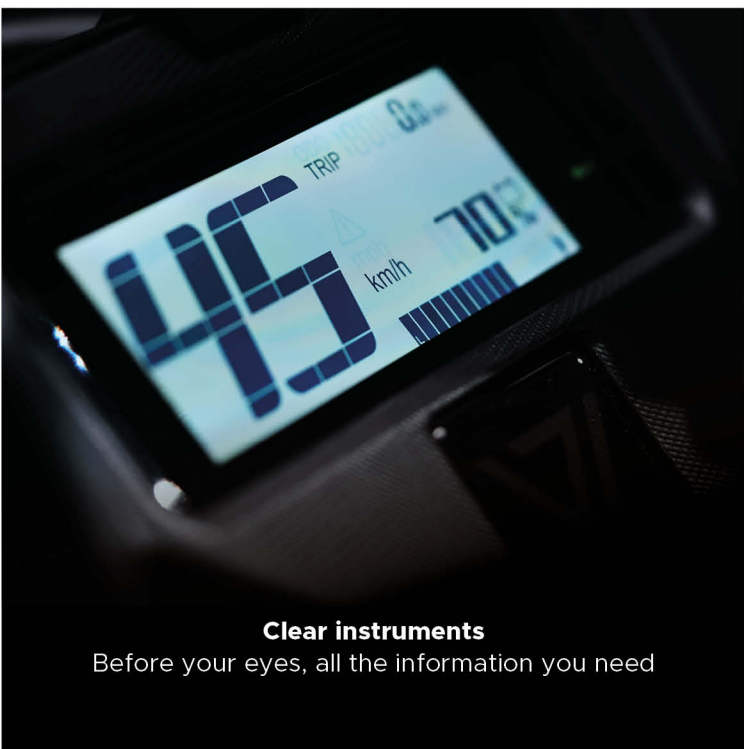
**Mobile phone holder**  
Practical and unbreakable



**Top box**  
Compatible with most common brands of accessories



**Easy to use**  
Lots of small construction tricks make F01 easy to use even for new users



**Clear instruments**  
Before your eyes, all the information you need



○ White

● Nado Grey

**TECHNICAL INFORMATION**

<b>Homologation</b>	L1, L3 (comparable to a 50cc, 125cc.)		
<b>Motor</b>	VMOTO	<b>Weight</b>	110 kg (60 V/45 Ah)   106 kg (60 V/32 Ah)
<b>Rated power</b>	2000 W L1   3500 W L3	<b>L*W*H</b>	1940 mm*730* mm*1160 mm
<b>Maximum power</b>	2400 W L1   4700 W L3	<b>Wheelbase</b>	1327 mm
<b>Battery model</b>	Polymer lithium battery	<b>Ground Clearance</b>	130 mm
<b>Battery capacity</b>	60 V/45 Ah   60 V/32 Ah	<b>Seat Height</b>	855 mm
<b>Charging time</b>	3.5 h (fast charger) 6 h (Normal charger)	<b>Rims</b>	Fr. 1.85-16   Rr. 2.5-14
<b>Input voltage</b>	220-240 VAC	<b>Tyres</b>	Fr. 90/80-16   Rr. 90/90-14
<b>Autonomy</b>	L1 80 km*   L3 65 km*	<b>Suspension</b>	Hydraulic damping system
<b>Max speed</b>	L1 45 km/h   L3 80 km/h	<b>Brakes</b>	CBS
<b>Climbing angle</b>	≤ 14°	<b>Colors</b>	White, Nado Grey

\*WMTC Stage 3

Tested at an average speed of 45 km/h; rider weight 75 kg.

**Warning:** The photos and technical information in this catalogue may refer to prototypes subject to modifications during production and are purely for illustration and reference purposes, and are therefore not binding on Vmoto International. Vmoto cannot be held responsible for any print and/or translation errors. This catalogue is transnational and therefore some products may not be available and/or their features may vary in accordance with local laws. Not all colours and versions are available in each country. Vmoto reserves the right to make changes and improvements to any product without obligation of prior notice or to make such changes to products already sold. Further characteristics of the products are contained in the pertinent owner's manuals. The products represented are not definitive versions and are therefore subject to significant changes at Vmoto's discretion without prior notice. The photographs published in this catalogue show only professional riders under controlled street conditions. Do not attempt to imitate such riding behaviour as it could be dangerous for you or other people on the road. This catalogue, including but not limited to the trademarks, logos, texts, images, graphics and table of contents herein, constitute Vmoto intellectual property, or in any event Vmoto has the right to reproduce it; any reproduction, modification or other whole or partial use of the catalogue or its contents, including publication on the internet without the prior written consent of Vmoto, is prohibited. Actual battery consumption may vary based on many factors, including but not limited to riding style, maintenance performed, weather conditions, surface characteristics, tyre pressure, load, weight of the rider and the passenger, accessories. The weights in running order are considered with all operating fluids, standard equipment and battery. For more information visit [www.vmotosoco.com](http://www.vmotosoco.com).


April 2023



VSI  
exceptional  
performance

Iconic full-LED front light and industry-leading performance:  
VSI is the B2B vehicle that never disappoints.

# strong and safe

  
**45** km/h  
L1 Max speed

  
**3.5** kW  
Engine power

  
**124** km  
Range  
(double batteries)

**80** km/h  
L3 Max speed

**3.5** kW  
Engine power

**116** km  
Range  
(double batteries)



A real workhorse of the Vmoto fleet. A safe and robust vehicle that allows a large load capacity without compromising driving comfort.



**2000 cm<sup>3</sup> storage space**  
All the space you need, at your fingertips



**Practical, in all occasions**  
USB charging port and helmet hook



**Easy to use**  
A reverse button for easy handling



**Front load**  
70 liters front basket loading volume

### TOP FEATURES

The chassis is rigid and light, combined with top-quality suspension and 17-inch wheels, just like a true road bike.



## FORMALIZED BATTERY PACK

Its dual-battery autonomy of up to 124 km is combined with outstanding performance: VS1 can reach a speed of 80 km/h and a torque of 165 Nm, even under full load.

**60V45Ah**  
Battery capacity

**3** years  
Warranty

**1500+**  
Cycles

**3.5** h  
Fast charger  
(optional)



## REMOVABLE ON BOARD CHARGER

Multi-stage intelligent charging function for a higher charging efficiency: it's able to charge dual batteries at the same time. 3.5 hours fully charged from 0% to 100%. CE Approved. reach a speed of 80 km/h and a torque of 165 Nm, even under full load.





# never stops

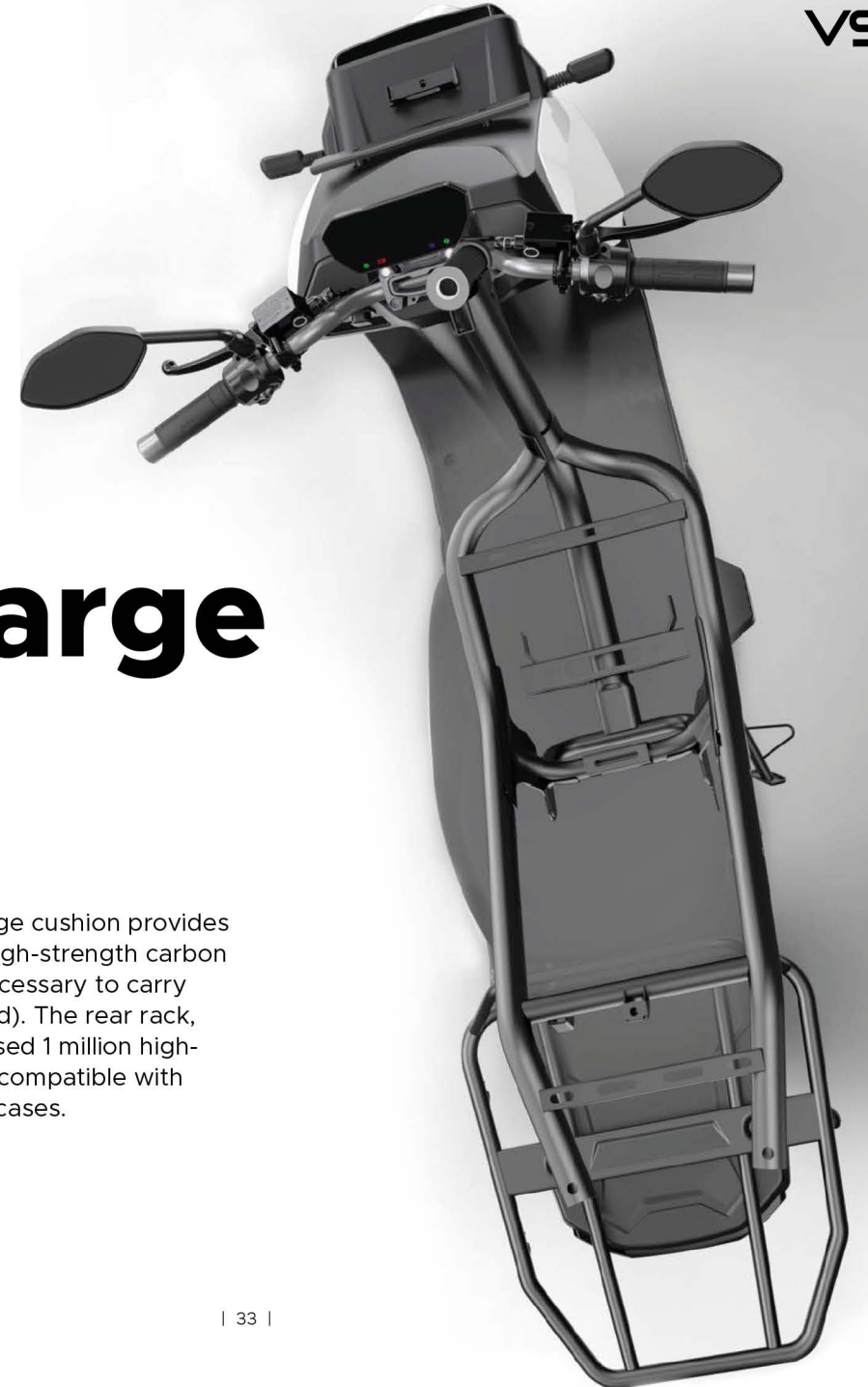
The front fairings of the VS1 can be easily removed to reach the electronic components, which are concentrated at the front of the scooter.



It only takes 5 minutes to change a wheel on the VS1, thanks to the patented single-sided swing arm: this minimises vehicle downtime and maximises the possibility and constancy of use.

# extralarge quality

The seat with extra thick sponge cushion provides maximum comfort, while the high-strength carbon frame offers all the support necessary to carry a load of 150 kg (rider excluded). The rear rack, made of carbon steel, has passed 1 million high-strength vibration tests and is compatible with various types of panniers and cases.





● Red

● Black

○ White

#### TECHNICAL INFORMATION

<b>Homologation</b>	L1, L3 (comparable to a 50cc, 125cc.)		
<b>Motor</b>	VMOTO	<b>Weight</b>	127 kg
<b>Rated power</b>	3500 W	<b>L*W*H</b>	2049 mm*727* mm*1141 mm
<b>Maximum power</b>	4700 W	<b>Wheelbase</b>	1366 mm
<b>Battery model</b>	Polymer lithium battery	<b>Ground Clearance</b>	154 mm
<b>Battery capacity</b>	60 V/45 Ah (Optional double batteries)	<b>Seat Height</b>	925 mm
<b>Charging time</b>	3.5 h (Fast charger)	<b>Rims</b>	Fr. 2.15-16   Rr. 2.5-14
<b>Output current</b>	15 Ah	<b>Tyres</b>	Fr. 100/80-16   Rr. 110/80-14
<b>Autonomy</b>	L1 124 km*   L3 116 km*	<b>Suspension</b>	Hydraulic damping system
<b>Max speed</b>	L1 45 km/h   L3 80 km/h	<b>Brakes</b>	CBS
<b>Climbing angle</b>	≤ 14°	<b>Colors</b>	Red, Black, White
<b>Loading capacity</b>	150 kg (exclude rider)		

\*WMTC Stage 3

Tested at an average speed of 45 km/h; rider weight 75 kg.

**Warning:** The photos and technical information in this catalogue may refer to prototypes subject to modifications during production and are purely for illustration and reference purposes, and are therefore not binding on Vmoto International. Vmoto cannot be held responsible for any print and/or translation errors. This catalogue is transnational and therefore some products may not be available and/or their features may vary in accordance with local laws. Not all colours and versions are available in each country. Vmoto reserves the right to make changes and improvements to any product without obligation of prior notice or to make such changes to products already sold. Further characteristics of the products are contained in the pertinent owner's manuals. The products represented are not definitive versions and are therefore subject to significant changes at Vmoto's discretion without prior notice. The photographs published in this catalogue show only professional riders under controlled street conditions. Do not attempt to imitate such riding behaviour as it could be dangerous for you or other people on the road. This catalogue, including but not limited to the trademarks, logos, texts, images, graphics and table of contents herein, constitute Vmoto intellectual property, or in any event Vmoto has the right to reproduce it; any reproduction, modification or other whole or partial use of the catalogue of its contents, including publication on the Internet without the prior written consent of Vmoto, is prohibited. Actual battery consumption may vary based on many factors, including but not limited to riding style, maintenance performed, weather conditions, surface characteristics, tyre pressure, load, weight of the rider and the passenger, accessories. The weights in running order are considered with all operating fluids, standard equipment and battery. For more information visit [www.Vmotosoco.com](http://www.Vmotosoco.com).

April 2023

# VS1 | PRO

ENVIABLE PERFORMANCE



### One step higher

One of the best sellers in the fleet sector is being upgraded with the entry of this improved version.

# more powerfull

  
**85** km/h  
Max speed

  
**4.9** kW  
Engine power

  
**135** km  
Range



Strength is assured and safety is the priority, the carbon frame provides maximum impact resistance and the position of the rack allows the rider to have the right height to avoid spinal strain when moving weights.



○ White

● Black

● Red

### Extra large quality

The seat with extra-thick sponge cushion provides maximum comfort, while the high-strength carbon frame offers all the support needed to carry a 150 kg load (rider excluded). The rear rack, made of carbon steel, has passed 1 million high-strength vibration tests and is compatible with various types of bags and suitcases.

TECHNICAL INFORMATION			
<b>Homologation</b>	L3 (comparable 125cc.)		
<b>Motor</b>	VMOTO	<b>Weight</b>	127 kg
<b>Rated power</b>	4300 W	<b>L*W*H</b>	2049 mm*727* mm*1141 mm
<b>Maximum power</b>	4900 W	<b>Wheelbase</b>	1366 mm
<b>Battery model</b>	Polymer lithium battery	<b>Ground Clearance</b>	154 mm
<b>Battery capacity</b>	60 V/90 Ah (Optional with 2 battery)	<b>Seat Height</b>	925 mm
<b>Charging time</b>	7 h (double batteries)	<b>Rims</b>	Fr. 2.15-16   Rr. 2.5-14
<b>Output current</b>	15 Ah	<b>Tyres</b>	Fr. 100/80-16   Rr. 110/80-14
<b>Autonomy</b>	135 km*	<b>Suspension</b>	Hydraulic damping system
<b>Max speed</b>	85 km/h	<b>Brakes</b>	CBS
<b>Climbing angle</b>	≤ 19°	<b>Colors</b>	Red, Black, White
<b>Loading capacity</b>	150 kg (exclude rider)		

\*WMTC Stage 3

Tested at an average speed of 45 km/h; rider weight 75 kg.

**Warning:** The photos and technical information in this catalogue may refer to prototypes subject to modifications during production and are purely for illustration and reference purposes, and are therefore not binding on Vmoto International. Vmoto cannot be held responsible for any print and/or translation errors. This catalogue is transnational and therefore some products may not be available and/or their features may vary in accordance with local laws. Not all colours and versions are available in each country. Vmoto reserves the right to make changes and improvements to any product without obligation of prior notice or to make such changes to products already sold. Further characteristics of the products are contained in the pertinent owner's manuals. The products represented are not definitive versions and are therefore subject to significant changes at Vmoto's discretion without prior notice. The photographs published in this catalogue show only professional riders under controlled street conditions. Do not attempt to imitate such riding behaviour as it could be dangerous for you or other people on the road. This catalogue, including but not limited to the trademarks, logos, texts, images, graphics and table of contents herein, constitute Vmoto intellectual property, or in any event Vmoto has the right to reproduce it; any reproduction, modification or other whole or partial use of the catalogue or its contents, including publication on the Internet without the prior written consent of Vmoto, is prohibited. Actual battery consumption may vary based on many factors, including but not limited to riding style, maintenance performed, weather conditions, surface characteristics, tyre pressure, load, weight of the rider and the passenger, accessories. The weights in running order are considered with all operating fluids, standard equipment and battery. For more information visit [www.vmotosoco.com](http://www.vmotosoco.com).

April 2023



VS2

a real gem

100% electric, professional and light,  
that will meet your business needs.

take work **lightly**



**Design for the modern urban riding**

Compact and lightweight, it glides smoothly through urban traffic and is the perfect partner for your workdays.





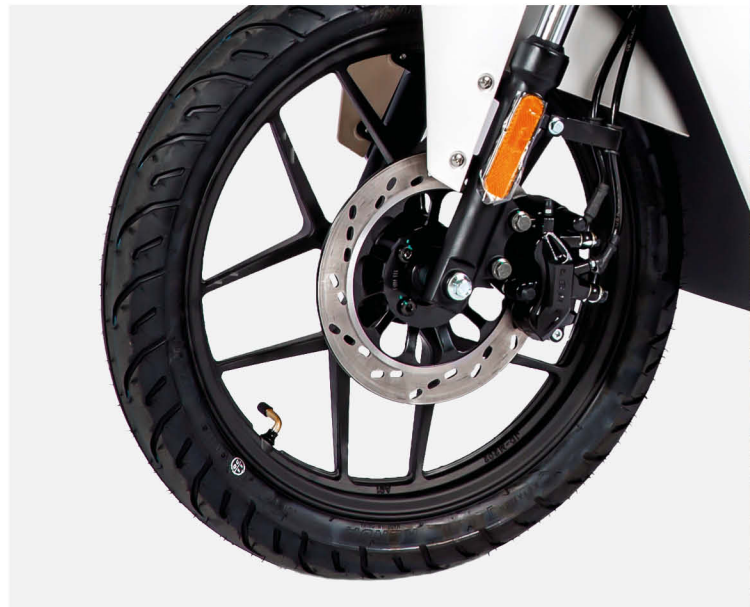
**16 inch wheel:** high trafficability



Single rear adjustable  
**suspension**



Single swingers for **easy maintenance**



**Double caliper brake** with  
high heat dissipation performance



**handly** and compact

VS2



get ready for

# a long journey



Swappable battery, with ATL soft core cells.

**60V45** Ah  
Battery capacity

**4** years+  
Battery life

**1500+**  
Cycle

**3.5** h  
Charging time





# clear view

Intelligent light sensitive display



It only takes 5 minutes to change a wheel on the VS1, thanks to the patented single-sided swing arm: this minimises vehicle downtime and maximises the possibility and constancy of use.



White

## TECHNICAL INFORMATION

<b>Homologation</b>	L1 (comparable to a 50cc)		
<b>Motor</b>	VMOTO	<b>Weight</b>	101 kg
<b>Rated power</b>	2000 W	<b>L*W*H</b>	1940 mm*730 mm*1160 mm
<b>Maximum power</b>	2400 W	<b>Wheelbase</b>	1327 mm
<b>Battery model</b>	Polymer lithium battery	<b>Ground Clearance</b>	145 mm
<b>Battery capacity</b>	60 V/45 Ah (Optional double batteries)	<b>Seat Height</b>	855 mm
<b>Charging time</b>	3.5 h (Fast charger); 6 h (Normal charger)	<b>Rims</b>	Fr. 1.85-16   Rr. 2.5-14
<b>Output current</b>	8 Ah	<b>Tyres</b>	Fr. 90/80-16   Rr. 90/90-14
<b>Autonomy</b>	80 km*	<b>Suspension</b>	Hydraulic damping system
<b>Max speed</b>	45 km/h	<b>Brakes</b>	CBS
<b>Climbing angle</b>	≤ 14°	<b>Colors</b>	White, Black, Yellow, Orange

\*WMTC Stage 3

Tested at an average speed of 45 km/h; rider weight 75 kg.

**Warning:** The photos and technical information in this catalogue may refer to prototypes subject to modifications during production and are purely for illustration and reference purposes, and are therefore not binding on Vmoto International. Vmoto cannot be held responsible for any print and/or translation errors. This catalogue is transnational and therefore some products may not be available and/or their features may vary in accordance with local laws. Not all colours and versions are available in each country. Vmoto reserves the right to make changes and improvements to any product without obligation of prior notice or to make such changes to products already sold. Further characteristics of the products are contained in the pertinent owner's manuals. The products represented are not definitive versions and are therefore subject to significant changes at Vmoto's discretion without prior notice. The photographs published in this catalogue show only professional riders under controlled street conditions. Do not attempt to imitate such riding behaviour as it could be dangerous for you or other people on the road. This catalogue, including but not limited to the trademarks, logos, texts, images, graphics and table of contents herein, constitute Vmoto intellectual property, or in any event Vmoto has the right to reproduce it; any reproduction, modification or other whole or partial use of the catalogue or its contents, including publication on the internet without the prior written consent of Vmoto, is prohibited. Actual battery consumption may vary based on many factors, including but not limited to riding style, maintenance performed, weather conditions, surface characteristics, tyre pressure, load, weight of the rider and the passenger, accessories. The weights in running order are considered with all operating fluids, standard equipment and battery. For more information visit [www.vmotosoco.com](http://www.vmotosoco.com).

April 2023



VS3

**unmistakable**

A vehicle with unique features and outstanding design.  
And with zero emissions, of course!

# an **extra** plus

3 wheels for this definitely outstanding vehicle in the Vmoto range. A practical, robust work vehicle, made even safer with three wheels, making it the ideal vehicle for handling your deliveries.



  
**45** km/h  
L1 speed

  
**2.5** kW  
Engine power

  
**100** Km  
Range

# outstanding

**45** km/h  
Max speed

**2.5** kW  
Engine power

**100** km  
Range



## Your business leads the way

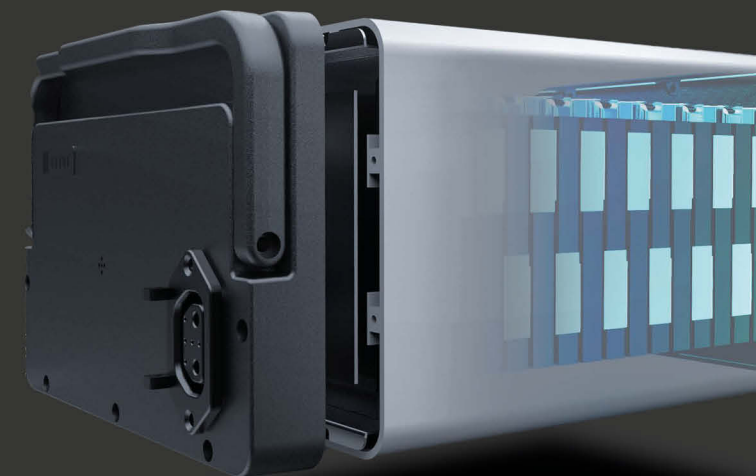
Up to 100 km of autonomy and a speed of 45 km/h ensure the VS3 takes care of your business in a safe, smart and environmentally friendly way.

**60V45** Ah  
Battery capacity

**3** years  
Warranty

**1500+**  
Cycles

**3.5** h  
Fast charger  
1 battery



Capacious and sturdy front rack



Wide rear loading platform



### Plenty of space, for your cargo and for you

An unprecedented load capacity for this vehicle, allowing you to put everything you want on board, either in the spacious front basket or in the large rear luggage rack, with a total weight of 150 kg. It can also be customized with optional 610 l maximum.



○  
White

#### TECHNICAL INFORMATION

<b>Homologation</b>	L1 (comparable to a 50cc)	<b>Weight</b>	188 kg (2 batteries included)
<b>Motor</b>	VMOTO	<b>L*W*H</b>	2200 mm*802 mm*1160 mm
<b>Rated power</b>	2500 W	<b>Wheelbase</b>	1535 mm
<b>Maximum power</b>	3100 W	<b>Ground Clearance</b>	154 mm
<b>Battery model</b>	Polymer lithium battery	<b>Seat Height</b>	790 mm
<b>Battery capacity</b>	60 V/45 Ah (Optional double batteries)	<b>Rims</b>	Fr. 2.15-16   Rr. 3.0-12
<b>Charging time</b>	3.5 h (single battery)	<b>Tyres</b>	Fr. 100/80-16   Rr. 125/65-12
<b>Output current</b>	15 Ah	<b>Suspension</b>	Hydraulic damping system
<b>Autonomy</b>	100 km*	<b>Brakes</b>	Split brake system (SBS)
<b>Max speed</b>	45 km/h	<b>Colors</b>	White (T.B.D.)
<b>Climbing angle</b>	≤ 14°		

\*WMTC Stage 3

Tested at an average speed of 45 km/h; rider weight 75 kg.

**Warning:** The photos and technical information in this catalogue may refer to prototypes subject to modifications during production and are purely for illustration and reference purposes, and are therefore not binding on Vmoto International. Vmoto cannot be held responsible for any print and/or translation errors. This catalogue is transnational and therefore some products may not be available and/or their features may vary in accordance with local laws. Not all colours and versions are available in each country. Vmoto reserves the right to make changes and improvements to any product without obligation of prior notice or to make such changes to products already sold. Further characteristics of the products are contained in the pertinent owner's manuals. The products represented are not definitive versions and are therefore subject to significant changes at Vmoto's discretion without prior notice. The photographs published in this catalogue show only professional riders under controlled street conditions. Do not attempt to imitate such riding behaviour as it could be dangerous for you or other people on the road. This catalogue, including but not limited to the trademarks, logos, texts, images, graphics and table of contents herein, constitute Vmoto intellectual property, or in any event Vmoto has the right to reproduce it; any reproduction, modification or other whole or partial use of the catalogue or its contents, including publication on the internet without the prior written consent of Vmoto, is prohibited. Actual battery consumption may vary based on many factors, including but not limited to riding style, maintenance performed, weather conditions, surface characteristics, tyre pressure, load, weight of the rider and the passenger, accessories. The weights in running order are considered with all operating fluids, standard equipment and battery. For more information visit [www.vmotosoco.com](http://www.vmotosoco.com).

April 2023

### CPX

### F01

### VS1

### VS1 | PRO

### VS2

### VS3

<b>Engine</b>	SUPER SOCO	VMOTO	VMOTO	VMOTO	VMOTO	VMOTO
<b>Power rating</b>	7000 W	L1 2000 W; L3 3500 W	L1 2000 W; L3 3500 W	4300 W	2000 W	2500 W
<b>Power peak</b>	8000 W	L1 2400 W; L3 4700 W	L1 2400 W; L3 4700 W	4900 W	2400 W	3100 W
<b>Battery model</b>	Polymer lithium battery	Polymer lithium battery	Polymer lithium battery	Polymer lithium battery	Polymer lithium battery	ATL softcore battery
<b>Battery capacity</b>	60 V/90 Ah	60 V/45 Ah or 60 V/32 Ah	60 V/45 Ah opt. with 2 battery	60 V/90 Ah	60 V/45 A	60 V/45 Ah optional with 2 battery packs)
<b>Input current</b>	15 A	-	15 A	15 A	8 A	15 A
<b>Input voltage</b>	220-240 VAC	220-240 VAC	220-240 VAC	220-240 VAC	220-240 VAC	220-240 VAC
<b>Charging time</b>	3.5 h (single battery)	3.5 h (Fast charger)	3.5 h (single battery)	7 h (double batteries)	3.5 h (Fast charger)	3.5 h (single battery)
<b>Max speed</b>	105 km/h	L1 45 km/h; L3 80 km/h	L1 45 km/h; L3 80 km/h	85 km/h	45 km/h	45 km/h
<b>Distance range</b>	100 km	L1 80km; L3 65Km	L1 124km*; L3 116 km*	135 km**	80 km**	100 km**
<b>Climbing corner</b>	≤ 20°	≤ 14°	≤ 14°	≤ 19°	≤ 14°	≤ 14°
<b>L*W*H</b>	2022 mm*757 mm*1450 mm	1940 mm*730 mm*1160 mm	2049 mm*727 mm*1141 mm	2049 mm*727 mm*1141 mm	1940 mm*730 mm*1160 mm	2200 mm*802 mm*1160 mm
<b>Weight</b>	143 kg	110kg or 106 kg	127 kg	127 kg	101 kg	170 kg (net weight)
<b>Wheelbase</b>	1366 mm	1327 mm	1366 mm	1366 mm	1327 mm	1535 mm
<b>Ground clearance</b>	154 mm	130 mm	154 mm	154 mm	145 mm	154 mm
<b>Seat height</b>	925 mm (R Point)	855 mm (R Point)	925 mm (R Point)	925 mm (R Point)	855 mm (R Point)	790 mm (R Point)
<b>Rims</b>	Fr 2.15-16/Rr.2.5-14	Fr 1.85-16/Rr.2.5-14	Fr. 2.15-16/Rr. 2.5-14	Fr. 2.15-16/Rr. 2.5-14	Fr 1.85-16/Rr. 2.5-14	Fr. 2.15-16/Rr. 3.0-12
<b>Tires</b>	Front 100/80-16 Rear 110/80-14	Front 90/80-16 Rear 90/90-14	Front 100/80-16 Rear 110/80-14	Front 100/80-16 Rear 110/80-14	Front 90/80-16 Rear 90/90-14	Front 100/80-16 Rear 125/65-12
<b>Suspension</b>	Hydraulic damping system	Hydraulic damping system	Hydraulic damping system	Hydraulic damping system	Hydraulic damping system	Hydraulic damping system
<b>Brakes</b>	CBS	CBS	CBS	CBS	CBS	Split Brake System
<b>Max Loading Qty</b>	-	150 kg (exclude rider)	150 kg (exlude rider)	150 kg (exlude rider)	52units	
<b>Colors</b>	○ White	○ White ● Gray	○ White ● Black ● Red	○ White ● Black ● Red	○ White	○ White

\*The data come from the corporate laboratory tests in ideal conditions and all data are for reference only

\*\* Average speed 45km/h with 75KG rider, with 2 batteries



**Electric Mobility**

**Vmoto Limited**

Level 48, 152-158 St Georges Terrace  
Perth Western Australia 6000, Australia

**Vmoto Soco International**

15, Zhongxing East Road - Lishui Economic Development Zone  
Lishui District, Nanjing 211200 - Jiangsu Province, China

**[vmotosoco.com](http://vmotosoco.com)**

**Vmoto Europe**

Boekweitstraat 95-97, 2153 GK  
Nieuw Vennepe, The Netherlands



Official  
Electric Scooter  
Supplier

**Vmoto Soco Italy**

Viale Fratelli Casiraghi, 427  
20099 S. San Giovanni  
Milan District, Italy







**Happiness is a journey**